

The CIMA Industries MT and RF Series Column Lifts are designed for the transfer and charging of tablets, powders, pellets, granules or capsules. They are ideal for use in conjunction with sieving/milling equipment, mixing/blending equipment, fluid bed, tablet press, capsule filling, roller compacting and coating equipment. When integrated with manufacturing/processing equipment these lifts will optimize production flow while simultaneously minimizing airborne dust and cross-contamination of products. Although they are widely used in the pharmaceutical and nutraceutical industries, they can also be applied to the food, cosmetic and chemical industries.



## STANDARD FEATURES

- 304/316 SS construction
- Working Capacity to 100kg
- Oscillating Valve
- Integrated Controls
- Cone Adapter
- UL approved electrical components
- Heavy Duty Hydraulic Drive
- cGMP Design
- IQ,OQ,PQ

CIMA Lift Systems provide solutions for a variety of applications. All systems are built to customer specifications for height, container design, stationary or portable with capacities up to 2000L.

## RF SERIES LIFT SYSTEM

The CIMA RF Series Lift System is comprised of a fixed chassis, stainless steel column, hydraulic lift, IBC, drum inverter, horizontal gyration system and skid appliance. After successfully filling the CIMA IBC and attaching the cone adapter, the drum can be slightly lifted and inverted 180 degrees. The column then lifts vertically to desired height and gyrated horizontally. When the outlet of the IBC is oriented above the inlet of the equipment to be charged, the oscillating valve is actuated for discharge. The lift height can be manufactured to customer requirement.

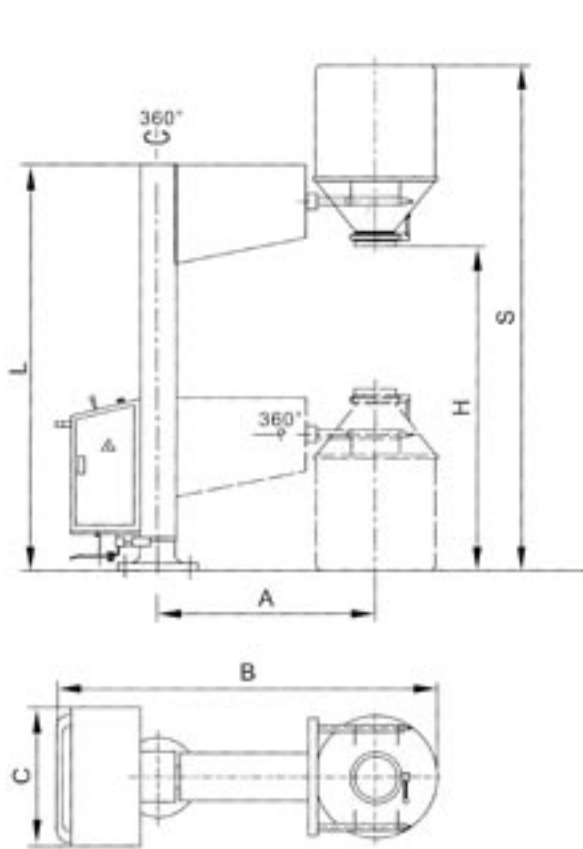




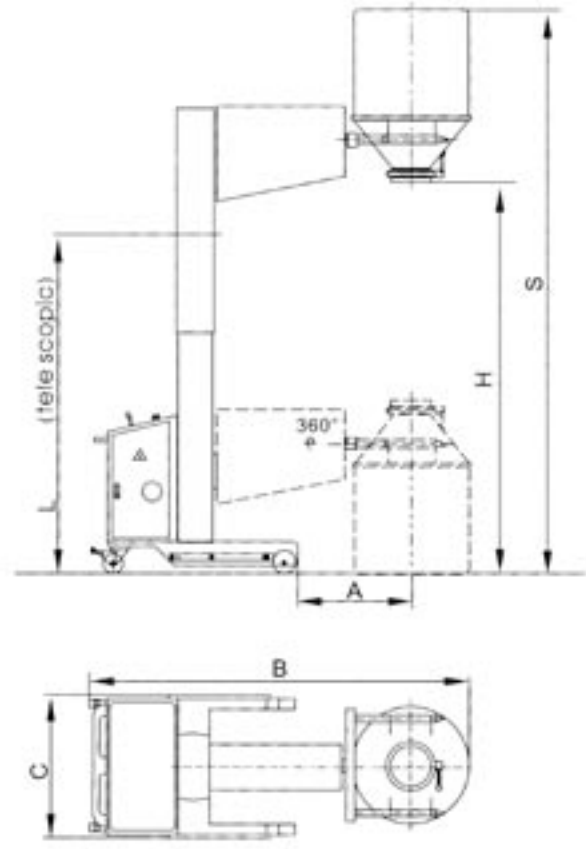
## MT SERIES LIFT SYSTEM

The MT Series Lift System consists of a stainless steel trolley, telescopic column, hydraulic drive, IBC (Intermediate Bulk Container) and on-board controls. The CIMA IBC is supplied with a special cone adapter that attaches to the IBC to form an integrated hopper. After the IBC is successfully filled and the cone adapter has been attached, the hopper is slightly elevated and inverted 180 degrees. The hydraulic column raises the IBC to the desired height and positions the discharge appropriately for the evacuation of its contents.

## TECHNICAL DATA



■ RF SERIES LIFT SYSTEM



■ MT SERIES LIFT SYSTEM

Parameters / Type	RF-100	MT-100
A	1100	600
B	1920	2000
C	750	750
L	2500	1950
H	2200	2500
S	3120	3420
Load (kg)	100	100
Power (kw)	1.5	1.5
Weight (kg)	340	470

