

The CIMA Batch Coating (CBC) System is a high-efficiency, energy saving coating system equipped with a fully perforated coating pan available in several different pan sizes. The CBC System is ideal for aqueous, solvent and sugar coating applications and provides enhanced thermal efficiency, sound absorption and ease of cleaning.



STANDARD FEATURES

- Wash In Place System
- Portable Solution Preparation and Delivery System
Constructed of 316L SS, electrically heated with agitation and integrated VFD peristaltic pump
- Siemens Color Touch Screen PLC Controls
- Completely Perforated Pans
- Explosion Proof Electrical Components and Drives
- Interior Mirror Polish Finish
- Exterior Finish to Customer Specification
- Self Draining Cabinet
- SS Air Handling System
- Inlet or Exhaust Temperature Control
- One Piece Machine Mounted Controls / Cabinet
- UL Approved Components
- HEPA Filtration System
- Exhaust Air Dust Collection System
- Air Inlet and Exhaust housings constructed of 304SS
- All Stainless Steel Construction
- Factory Acceptance Test (FAT) Prior to Shipment
- 1 Year Warranty including Spare Parts

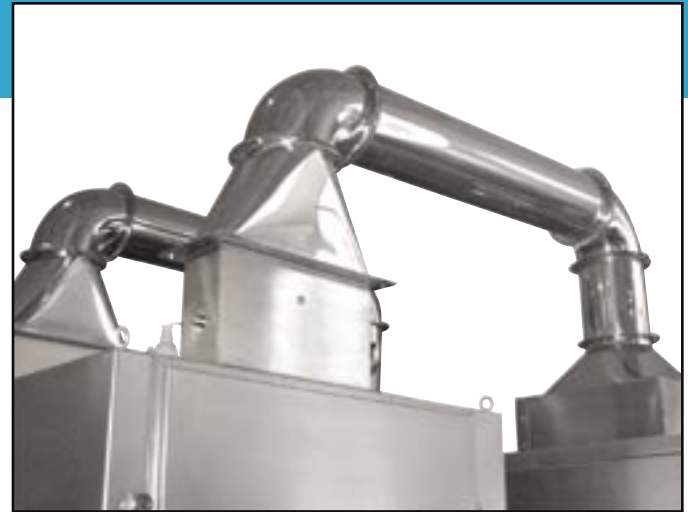


SOLUTION PREPARATION & DELIVERY SYSTEM

The Solution Preparation & Delivery System is a standard feature included with all CIMA Batch Coating Systems.

The system offers the following standard features:

- 316L Stainless Steel Construction
- Mirror Polish Finish (or to Customer Specification)
- Electrically Heated
- Propeller Style Agitation with vari-speed drive
- Integrated Peristaltic Pump with Stainless Steel Housing and vari-speed drive
- Integrated Control Panel
- Mounted on Casters (Portable)



AIR HANDLING SYSTEM

The Air Handling System is a standard feature included with all CIMA Batch Coating Systems.

The system offers the following standard features:

- Air Inlet and Exhaust Housing is constructed of 304
- Stainless Steel
- HEPA Filtration to 99.99
- Exhaust Air Dust Collection System
- Explosion Proof Drive & Electrical Components
- Dual Process Control - Inlet or Exhaust Air Temperature Control
- A Process Air Dehumidification System can be provided in addition to these standard features.**

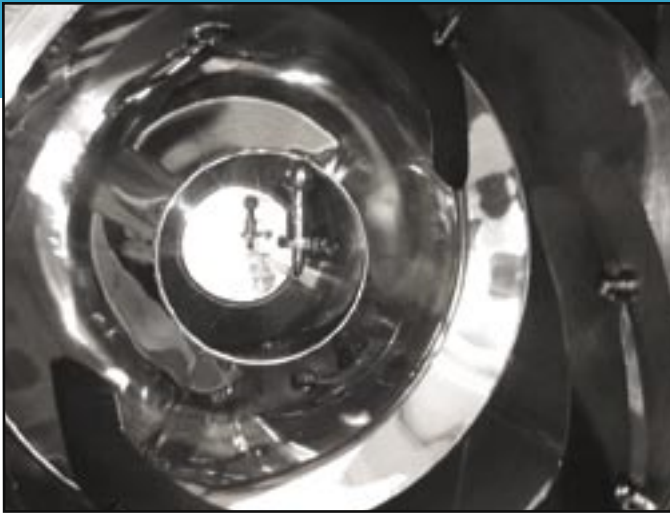
**Non-Standard/Optional

INSTALLATION & DOCUMENTATION

Installation is included with every CIMA Batch Coating System and two options are available:

- **FREE STANDING INSTALLATION** The CBC System is designed as a self-contained, free standing unit. The cabinet/controls are totally enclosed and the machine utilizes a simple thru-the-door process for product discharge.
- **IN-WALL-INSTALLATION** All production model CBC Systems can be configure for flush wall mount installation. In-wall installation allows for the separation of the operator/process area from the machines mechanical operation. Product discharge is easily achieved thru-the-door.

All CIMA Batch Coating Systems can be provided with documentation for Installation Qualification (IQ), Operation Qualification (OQ) and Production Qualification (PQ). Additionally, all CBC Systems are provided with a Factory Acceptance Test (FAT) and detailed documentation as standard with purchase.



WASH-IN-PLACE SYSTEM

The Wash-In-Place System (WIP) is standard equipment on all CIMA Batch Coating Systems.

The System offers the following standard features:

- The WIP automatic cleaning system is centralized and constructed with 304SS pipelines for distributing lotions, water, detergents and compressed air (drying) to all six (6) cleaning balls.
- Equipped with a pressurized water pump, detergent container and transfer pump for compounding detergent.
- PLC Controlled with multiple preset programs for different cleaning conditions.
- All connections between the WIP system and main machine are 304SS.
- Six (6) high intensity spray balls fixed between the main housing and coating drum
- One (1) removable spray ball for use inside the coating drum.
- Machine can be dried with compressed air via spray balls



SPRAY SYSTEMS

All CIMA Batch Coating Systems provide the latest advances in spray technology.

The System offers the following standard features:

- Guns and Controls
- Integrated Pump
- Flow Meter
- Installation and Training

CIMA INDUSTRIES LABORATORY & DEVELOPMENT SERVICES

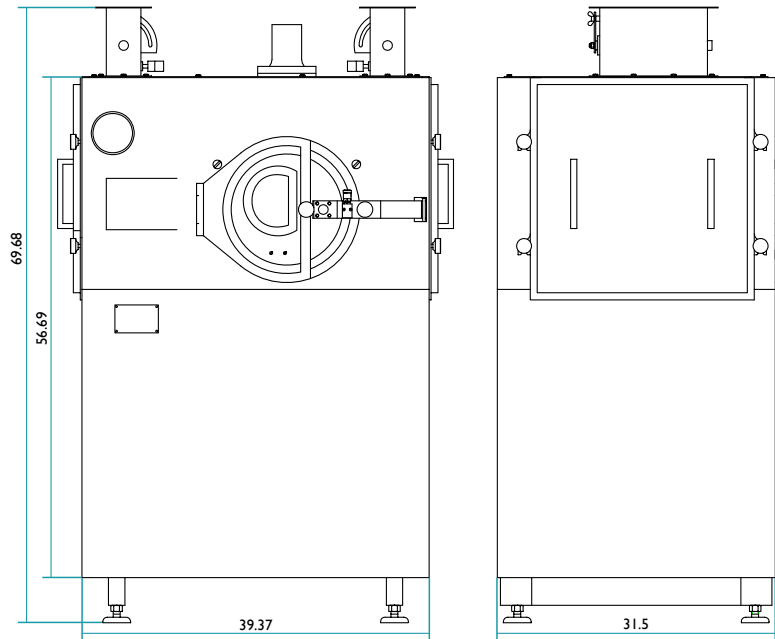
CIMA Industries can help create, develop and enhance your custom coatings in our 10,000 Sq. Ft. laboratory and development facility.

CIMA Industries staff of skilled technicians, scientists, process engineers and processing program specialists will partner with your development team to optimize all aspects of the coating system. In-house training and re-fresher courses, education seminars, remote webinars and video instruction are integrated into a total operating package to meet our customers exacting standards

Sales / Support

Pharmaceutical Machinery Sales and Leasing, S.A. de C.V.
Esmeril 1964
Colonia Alamo Industrial
Guadalajara, Jalisco
CP 44490
+52 33 3666 1144
www.cimaindustries.com

TECHNICAL DATA



MODEL	CBC-10	CBC-40	CBC-75	CBC-150	CBC-350	
Production capacity (kg/run)	10	40	75	150	350	
Drum diameter (mm)	610	850	950	1200	1580	
Volume of drum (L)	10	40	75	150	350	
Pan opening (mm)	280	380	380	480	580	
Drum speed (rpm)	6-30	4~23	4~19	2~15	2-11	
Main machine (kw)	2.2	0.75	1.1	2.2	4.0	
Process air temperature (° C)	80°C Setpoint control					
HEPA filtration (mm)	99.99°C					
Inlet air hand (kw)	.55	1.1	1.1	1.1	3.0	
Exhaust air handler (kw)	5.5	3	3	5.5	7.5	
Peristaltic pump (kw)	0.18	0.18	0.18	0.18	0.18	
Overall dimension of main machine (mm)	1100x750x1540	1260x920x1600	1350x1010x1630	1570x1260x1950	2000x1560x2330	
Weight of main machine (kg)	350	550	650	750	1500	
Overall dimension of inlet air handler (mm)	1100x900x2140		1100x900x2140	1100x1150x2300	1610*1090*2200	
Weight of inlet air handler (kg)	200	200	200	500	500	
Overall dimension of exhaust air handler (mm)	720x780x1950		720x780x1950	800x920x2080	1650x850x220	
Weight of exhaust air handler (kg)	250	250	250	400	700	
Steam	Pressure	>0.4MPA	>0.4MPA	>0.4MPA	>0.4 MPA	>0.4 MPA
	Air Consumption	*60 kg/min	*80 kg/min	*80 kg/min	*150 kg/min	*200 kg/min
Water supply*pressure	> 0.15MPa					

